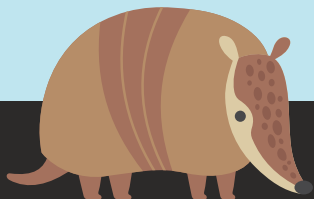


You're traveling along the road
and an armadillo runs out onto
the road. What is the stopping
distance if traveling...

5 mph?



2 stories!

It can take 16ft, or almost 2 stories to stop when traveling 5mph?



Youth Transportation

SAFETY

P R O G R A M

You're traveling along the road
and a cyclist pulls out onto the
road. What is the stopping
distance if traveling...

15 mph?



5 stories!



It can take 55ft, or
5 stories to stop
when traveling
15mph. That's as
tall as Big Tex!

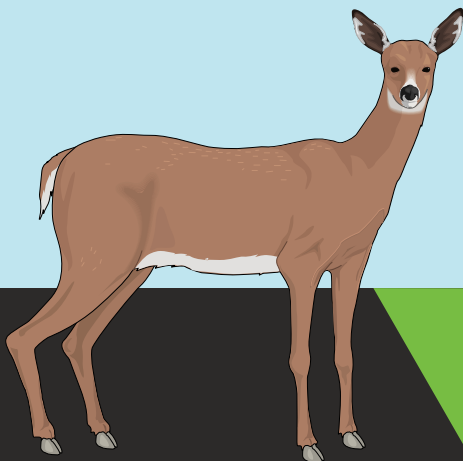
Youth Transportation

SAFETY

P R O G R A M

**You're traveling along the road
and a deer runs out onto the road.
What is the stopping distance if
traveling...**

20 mph?



8 stories!



It can take 78ft, or 8 stories to stop when traveling 20mph!
That's as tall as Buckingham Palace!



Youth Transportation

SAFETY

P R O G R A M

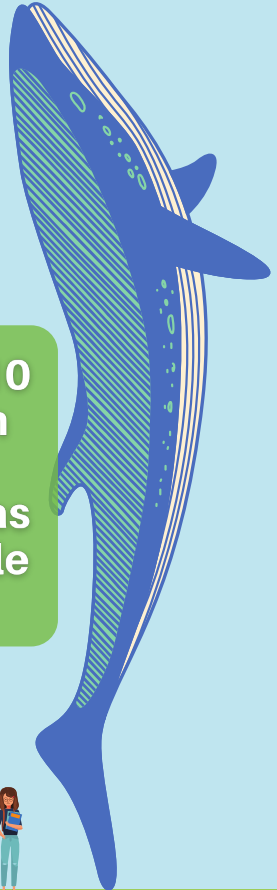
**You're traveling along the road
and a pedestrian walks out onto
the road. What is the stopping
distance if traveling...**

25 mph?



10 stories!

It can take 103ft, or 10 stories to stop when traveling 25mph! That's almost as tall as the largest blue whale (110ft)!



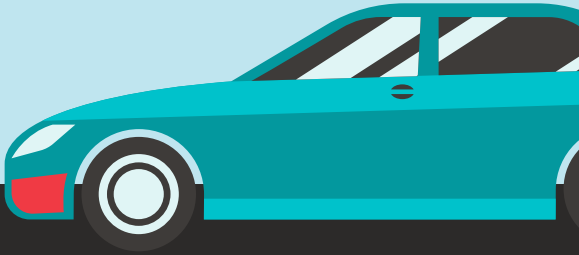
Youth Transportation

SAFETY


P R O G R A M

**You're traveling along the road
and a car pulls out onto the road.
What is the stopping distance if
traveling...**

30 mph?



12 stories!

An illustration of the Jefferson Memorial in Washington, D.C. The central feature is a large white dome with a grey base, supported by a circular colonnade of white columns. In the foreground, a small person with brown hair, wearing a blue backpack and light blue pants, stands on a green lawn to provide a sense of scale. A large blue speech bubble with a white border is positioned in front of the memorial, containing text. The background is a clear light blue sky, and there are some green bushes on the right side.

It can take 131ft, or 12 stories to stop when traveling 30mph! That's almost taller than the Jefferson Memorial (129ft)!

Youth Transportation

SAFETY


P R O G R A M

You're traveling along the road
and a rabbit runs out onto the
road. What is the stopping
distance if traveling...

40 mph?



18 stories!

A stylized illustration of Cinderella's Castle with multiple towers and blue roofs. A green callout box is overlaid on the castle, containing text. A small figure of a person stands at the base of the castle for scale.

It can take 194ft, or 18 stories to stop when traveling 40mph! That's taller than Cinderella's Castle (189ft)!

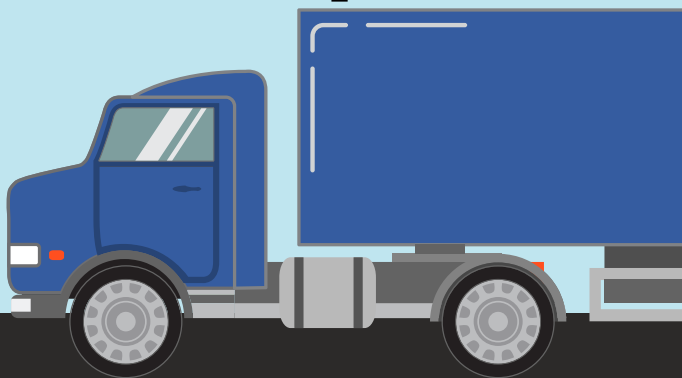
Youth Transportation

SAFETY

PROGRAM

**You're traveling along the road
and a truck pulls out onto the
road. What is the stopping
distance if traveling...**

55 mph?



28 stories!

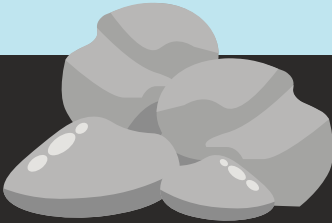


It can take 306ft, or 28 stories to stop when traveling 55mph! That's as tall as the Statue of Liberty (305ft)!



You're traveling along the road
and you suddenly see debris in
the road. What is the stopping
distance if traveling...

75 mph?



40 stories!

It can take 489ft, or 40 stories to stop when traveling 75mph! That's taller than the Great Pyramid of Giza (454ft)!

Youth Transportation

SAFETY

P R O G R A M

